




# 1103 MORNINGSIDE LANE



© Nelson Construction

## PLAN SUMMARY

 1-1/2 Story

**\$ 379,900**

 2.5 Bathrooms

 2,409 Square Feet

 4 Bedrooms

 3 Car Garage

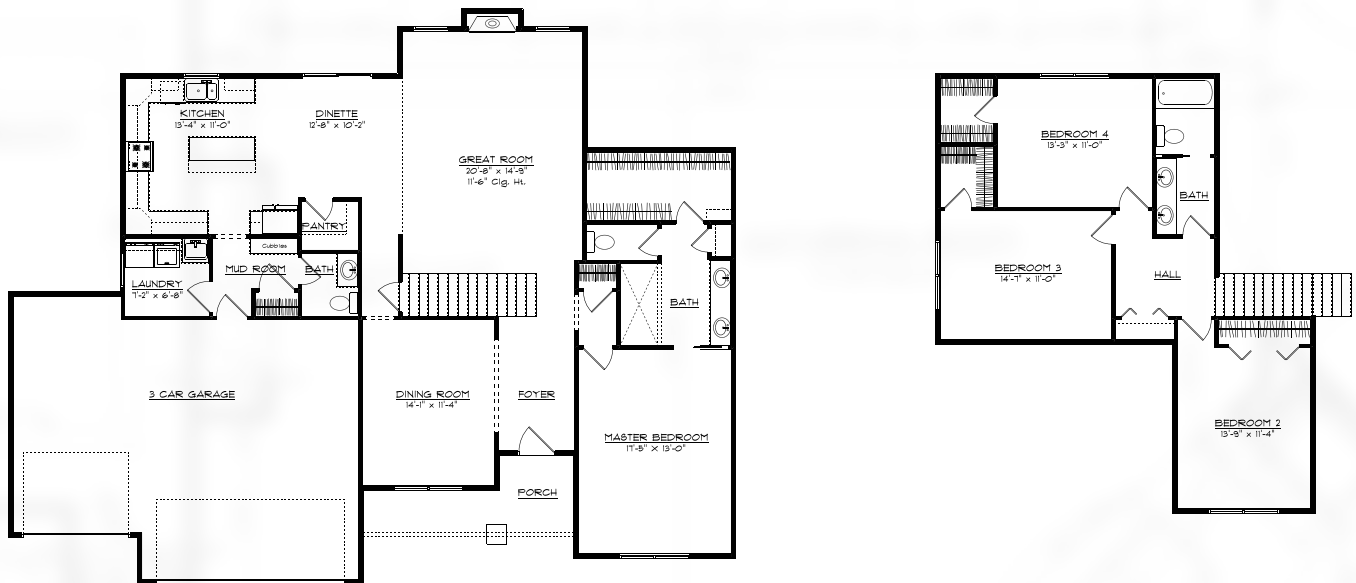
217.586.4111

WWW.NELSON.BUILDERS



COMMITTED TO BUILDING 100% ENERGY STAR HOMES

# 1103 MORNINGSIDE LANE - MAHOMET, IL



**\$379,900**

You will love the many upgrades and designer features throughout this new ENERGY STAR Certified home by Nelson Builders. Upon entering the foyer with its 11-foot ceilings, you will notice the wide plank, wire-brushed, wood flooring, shiplap accents, and designer selected lighting. The great room transom windows flank a gorgeous fireplace and allow sunlight to flood this open floor plan. The Pinterest worthy kitchen includes Amish made, light grey cabinetry, quartz countertops, an upgraded range, wall-mounted hood, large pantry, built-in microwave, and rustic hickory floating shelves. With a large island, eat-in kitchen area, and separate dining room, this floor plan offers a perfect space for all sizes of entertaining. A walk through the main level master suite leads you to a massive walk-in closet and large en-suite featuring a seven-foot tile shower and shiplap accents. Walk-in closets can also be found in two of the three sizable upstairs bedrooms. The upstairs bath features vintage-inspired tile flooring, a double vanity, and separate water closet and shower. In addition to design, we are committed to energy efficiency. We go beyond anyone else by using a combination of spray foam and blown-in cellulose, high-efficiency mechanical systems, a tankless water heater, 96.5% furnace with 14.0 SEER A/C, and 100% LED light bulbs. Take a moment to compare and you will find no one comes close to our pledge on energy efficiency!

Lot Size	82 x 125 x 82 x 125
Bedrooms	4
Bathrooms	2.5
Garage	3 Car Attached
Basement	Full Unfinished
Exterior	Vinyl
Roof	Asphalt Shingle
Schools	Mahomet



First Floor	1,627 Sq Ft
Second Floor	782 Sq Ft
<b>TOTAL</b>	<b>2,409 Sq Ft</b>
Basement (Unfinished)	1,627 Sq Ft

Great Room	20'-8" x 15'-5"
Dining Room	14'-1" x 11'-4"
Kitchen	28'-5" x 13'-4"
Laundry Room	7'-2" x 6'-8"
Master Bedroom	17'-5" x 13'-0"
Bedroom 2	13'-9" x 11'-4"
Bedroom 3	14'-7" x 10'-11"
Bedroom 4	13'-3" x 11'-0"

2018.02.24

[WWW.NELSON.BUILDERS/FOR-SALE/1103-MORNINGSIDE-LANE](http://WWW.NELSON.BUILDERS/FOR-SALE/1103-MORNINGSIDE-LANE)

While we make every effort to present accurate information about our homes, we cannot guarantee the accuracy of information contained on this sheet. Interested parties are advised to independently verify this information through personal inspection or with appropriate professionals. Any unauthorized use of this plan, in whole or in part, is prohibited.  
© 2018 Nelson Builders