

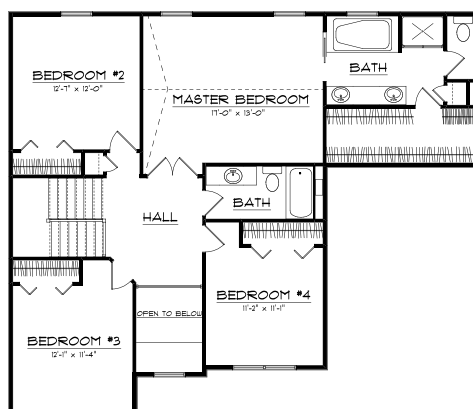
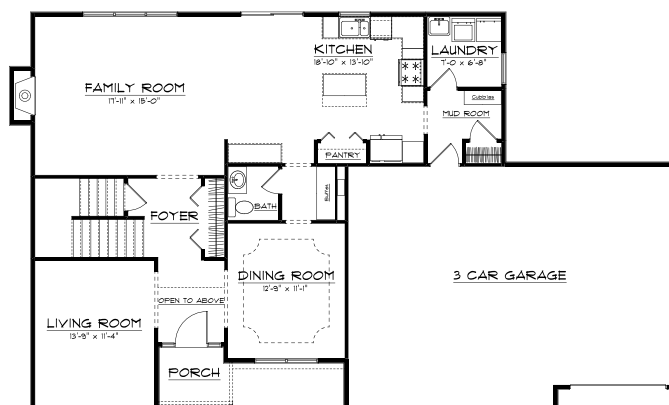


## *The Linden*

This home features a two story foyer with a stairway tucked away in the center of the home. The dining room is trimmed with a tray ceiling, decorative crown moulding, and chair rail. There is also a butler's pantry leading to the chef's dream kitchen with its knotty alder cabinets, stainless steel appliances, ceramic tile floor, and granite counter-tops. That important drop zone from the garage to house is lined with cubbies. The large master suite features a vaulted ceiling in the bedroom. The master bath has double vanities, whirlpool, separate shower, linen closet, and a master closet that your neighbors will envy. All this, plus an unfinished basement with future bath rough-in and a three car garage.

### **PLAN SUMMARY**

First Floor	1,269 Sq. Ft.
Second Floor	1,278 Sq. Ft.
TOTAL	2,556 Sq. Ft.



*We reserve the right to modify this plan or price at any time without notice. All plans are the property of Scott Nelson Construction, Inc. Any unauthorized use or reproduction, in whole or in part, of this plan is prohibited. © 2014 Scott Nelson Construction, Inc.*



**1600 Spring Creek Drive • Mahomet, Illinois 61853**  
**(217) 586-4111 • [www.scottnelsonconstruction.com](http://www.scottnelsonconstruction.com)**